

# Choose Colortrac SmartLF CCD and CIS scanning technology for demanding AEC, CAD, GIS and professional color graphics applications



www.colortrac.com

SmartLF scanner	Module	Image sensors	Document image size	Color			Speed@200dpi in/s		Resolution (dpi)		Connectivity		LCD Display	Media thickness		Instant on, no warm up	Paper feed	Application
				Black & White	Grayscale	24-bit Color	Black & White	24-bit Color	Optical	Enhanced	USB2	Ethernet 1000		Standard model	T (Thick) model			
Ci 24	m c e	3 x CIS	24" D-size+ A1+	✓	✓	✗	10.00	✗	600	9600	✓	✓	✓	0.012" / 0.3mm	✗	✓	Face up	Technical Maps
						✓	10.00	1.67										
						✓	10.00	3.33										
Gx+ 28	m c e	4 x CCD	28" D-size+ A1+	✓	✓	✗	12.00	✗	1200	9600	✓	✓	✓	0.08" / 2mm	0.8" / 20mm	✓	Face down	Technical Maps Photos / Artwork
						✓	12.00	1.00										
						✓	12.00	4.00										
Ci 40	m c e	5 x CIS	40" E-size+ A0+	✓	✓	✗	10.00	✗	600	9600	✓	✓	✓	0.012" / 0.3mm	✗	✓	Face up	Technical Maps
						✓	10.00	0.83										
						✓	10.00	3.33										
Cx 40	m c e	5 x CIS	40" E-size+ A0+	✓	✓	✗	9.00	✗	600	3600	✓	✗	✓	0.08" / 2mm	✗	✓	Face down	Technical Maps
						✓	9.00	0.75										
						✓	9.00	3.00										
Gx+ 42	m c e	6 x CCD	42" E-size+ A0+	✓	✓	✗	12.00	✗	1200	9600	✓	✓	✓	0.08" / 2mm	0.8" / 20mm	✓	Face down	Technical Maps Photos / Artwork
						✓	12.00	1.00										
						✓	12.00	4.00										
Gx+ 56	m c e	8 x CCD	56" E-size+ / A0+ landscape	✓	✓	✗	9.00	✗	600	9600	✓	✓	✓	0.08" / 2mm	0.8" / 20mm	✓	Face down	Technical Maps Photos / Artwork
						✓	9.00	1.50										
						✓	9.00	3.00										

## SmartLF Gx+ 56

World's Widest extra-wide Technical Imaging and Graphic Arts scanner. Includes SmartLF All-in-One software.



CCD 56" 600 9600 LED GIGABIT

## SmartLF Gx+ 42

A0 / E-size Technical Imaging and Graphic Arts scanner. Includes SmartLF All-in-One software.



CCD 42" 1200 9600 LED GIGABIT



## Colortrac SmartLF wide format scanners and Universal copier systems

- sharp, high definition images and true color fidelity
- 'scan once' workflow with 'right first time' productivity
- choice of instant-on CCD or CIS for best fit to your application
- affordable prices for exceptional value for money

### SmartLF Ci 24

A1 / D-size Technical Imaging scanner. Includes SmartLF All-in-One software.



CIS 24" 600 9600 LED GIGABIT

### SmartLF Gx+ 28

A1 / D-size Technical Imaging and Graphic Arts scanner. Includes SmartLF All-in-One software.



CCD 28" 1200 9600 LED GIGABIT



### SmartLF Ci 40

A0 / E-size Technical Imaging scanner. Includes SmartLF All-in-One software.



CIS 40" 600 9600 LED GIGABIT

### SmartLF Cx 40

A0 / E-size Technical Imaging scanner. Includes SmartLF All-in-One software.



CIS 40" 600 3600 LED USB 2.0

### Universal SmartLF SCAN & COPY Station

A versatile color system for capturing, sharing and reproducing documents to networked digital archives, workstations and printers.



### Universal SmartLF MFP System

Compact, multi-function wide format copier with simple one-touch controls. Combines any SmartLF scanner with any large format printer.

**Monochrome** (left) | **Full Color** (right)

**CIS is optimized for Technical Imaging** (green banner)

**CCD is optimized for Graphics Arts and Technical Imaging** (red banner)

Applications shown: Mono AEC & CAD, Grayscale / Newspaper, Blueprints, Limited Color AEC and CAD Documents, GIS / Maps, Photos and Graphic Arts.

Mono AEC & CAD

Grayscale / Newspaper

Blueprints

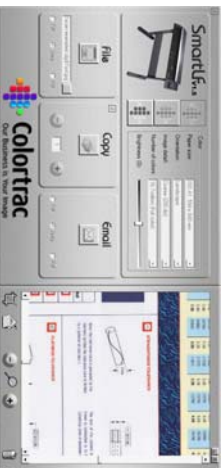
Limited Color AEC and CAD Documents

GIS / Maps

Photos and Graphic Arts

# Colortrac large format scanning software

## SmartLF All-In-One



SmartLF All-in-One software is supplied with every SmartLF large format scanner. It provides non-specialist SmartLF scanner users with a quick and easy scan to file, scan to copy (print) and scan to PDF (email) capability.

### What SmartLF All-in-One does:

SmartLF software is designed to be simple to use while providing non-specialist SmartLF scanner users with all the scan to file, scan to copy and scan to PDF functionality they need. SmartLF software saves scanned documents as TIFF, JPG or PDF files individually or in a batch, and makes copies of your technical documents to any Windows printer.

### What SmartLF All-in-One is for:

- AEC and CAD B/W and color drawings
- GIS B/W and color maps
- In-house graphics
- Data Capture

### SmartLF All-in-One features

- Easy to understand and operate
- Copy to any Windows printer
- Save to JPG, PNG, TIFF and PDF
- Work in batch scan or copy modes
- Scanner START/STOP controls
- Makes non-specialist users productive

### Supported SmartLF scanners

SmartLF All-in-One software supports all Colortrac SmartLF large format scanners.



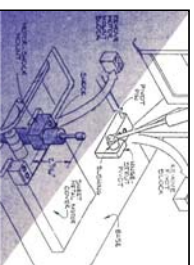
## ScanWorks



ScanWorks scan-to-file software is the large format scanning industry's most productive technical document and map scanning software.

### What ScanWork does:

Its unique "scan once" technology boosts workflow by eliminating the need for prescans and rescans. Just scan once, then edit the results in real time. No other scanning software makes professional scanning as fast and simple - and you so productive!



IAT Image Restoration

### What ScanWorks is for:

- AEC and CAD B/W and color drawings
- GIS B/W and color maps
- Data Capture

### ScanWorks features

- "Scan once, edit many" - no rescanning
- Fast, "on-the-fly" image editing
- Intelligent Adaptive Thresholding (IAT)
- Image restoration acclaimed "the best"
- Save to JPG, PNG, TIFF and PDF
- Work in batch scan or copy modes

### Supported SmartLF scanners

ScanWorks software supports all Colortrac SmartLF large format scanners.

## CopySmart



CopySmart scan-to-copy software makes really fast, highly accurate professional inkjet or LED color copies a quick and simple job.

### What CopySmart does:

CopySmart uses special internal plotter drivers and a file based TIFF driver for accurate copy size control, minimum paper wastage and minimum configuration effort. Printer data is routed via the printer's Windows connection and copying often begins just seconds after pressing Copy. You can color calibrate (profile) CopySmart to any paper and ink in minutes using the supplied IT8 target and in-built calibration Wizard.

### What CopySmart is for:

- AEC and CAD B/W and color drawings
- GIS B/W and color maps
- In-house graphics
- Repro, Graphics and Quick Print

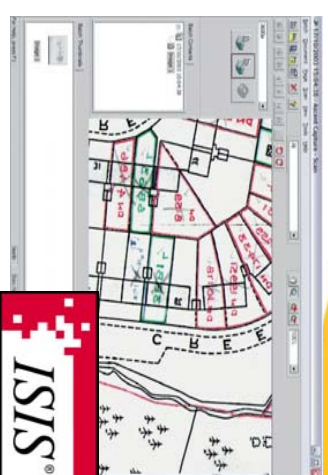
### CopySmart features

- Wizard assisted color calibration
- Wide range of supported printers
- TIFF driver for LED and RLPs
- Simple interface and controls
- Crop and copy directly from Preview
- Color profile any ink and media (IT8)
- Copy economically to any paper size

### Supported SmartLF scanners

CopySmart software supports all Colortrac SmartLF large format scanners.

## SmartLF ISIS



ISIS is the industry standard scanner interface for electronic document management (EDM).

### What SmartLF ISIS software does:

Our unique SmartLF ISIS driver interfaces the full range of SmartLF large format scanners directly with your EDM application. Our ISIS driver connects directly with ISIS-compliant EDM software products, like KOFAX Ascend Capture, Captiva Capture, QuickScan Pro, InputAccel, Laserfiche Rio, etc. If you are new to large-format scanning but run ISIS EDM software you can scan directly from any SmartLF scanner using your EDM software's scanning interface. These familiar ISIS dialogue boxes reduce the need for costly training.

### What SmartLF ISIS is for:

- Data Capture

### SmartLF ISIS Driver features

- It's the only large format ISIS driver
- Supports your app's familiar ISIS interface
- Works with all ISIS-compliant software
- ISIS guarantee of data compatibility
- Colortrac guarantee of image quality

### Supported SmartLF scanners

All SmartLF large format scanners support the ISIS standard, the only ones to do so.